

THE LONDON RESORT

The London Resort Development Consent Order

BC080001

Environmental Statement Volume 3: Figures

Figure 16.19 – Construction Buffer Zone and Worst Case Locations of Relevant Receptors

Document reference: 6.3.16.19

Revision: 00

December 2020

Planning Act 2008

The Infrastructure Planning (Applications: Prescribed Forms and Procedure) Regulations 2009

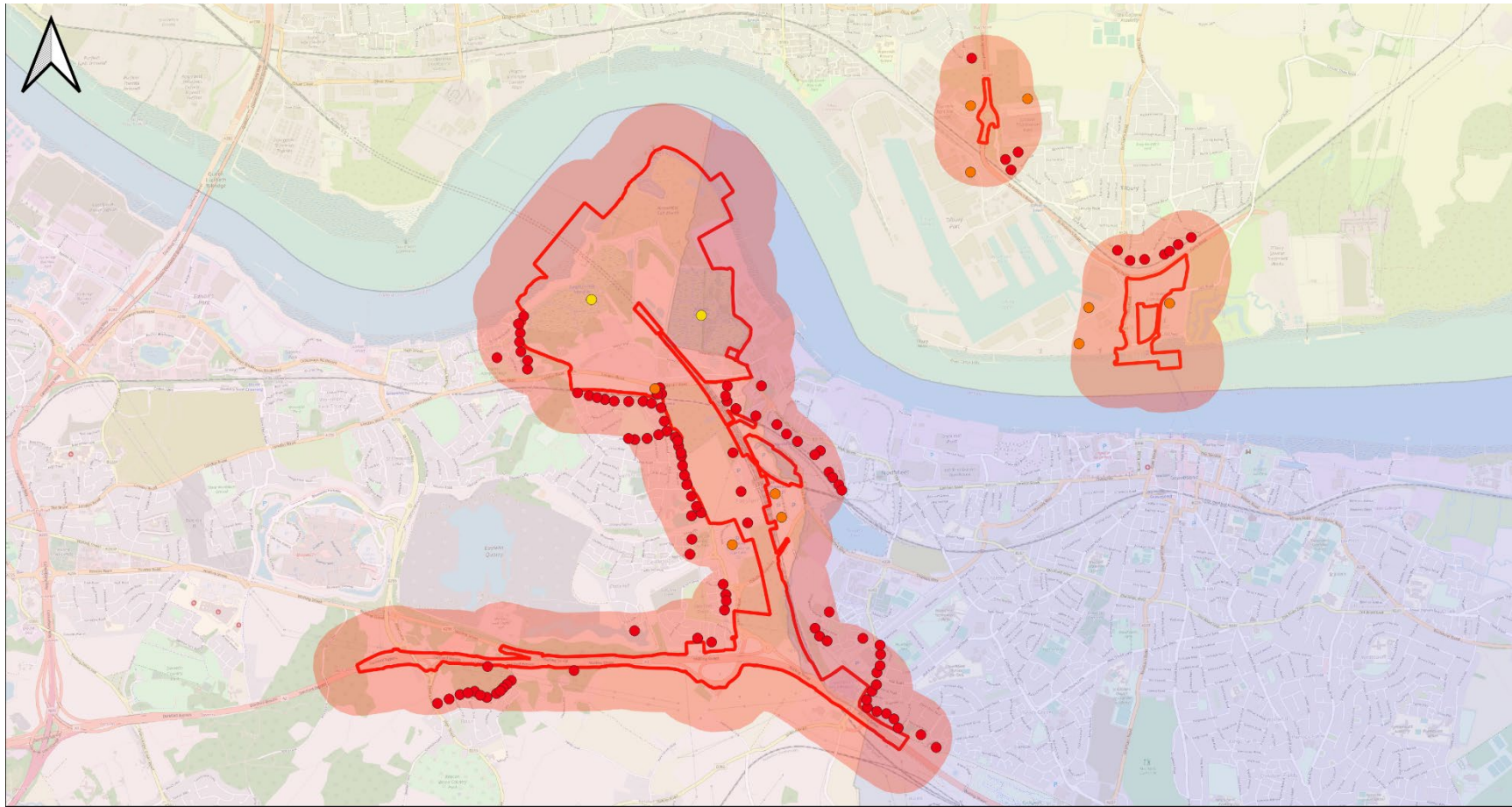
Regulation 5(2)(a)

The Infrastructure Planning (Environmental Impact Assessment) Regulations 2017

Regulation 12(1)

[This page is intentionally left blank]

Figure 16.19 Construction Buffer Zone and Worst Case Locations of Relevant Receptors



Key

- | | | |
|----------------------------|------------------------|--------------------|
| — Order Limits | Construction Receptors | Local Authorities |
| Distance from Order Limits | Sensitivity | Dartford District |
| 350m | ● High | Gravesham District |
| | ● Medium | Thurrock |
| | ● Low | |



